



Thermo Scientific  
**GRAMS Suite**

Version 9.3

**Welcome Guide**

**Thermo**  
SCIENTIFIC

© 2016 Thermo Fisher Scientific Inc. All rights reserved.

Thermo Fisher Scientific Inc. provides this document to its customers with a product purchase to use in the product operation. This document is copyright protected and any reproduction of the whole or any part of this document is strictly prohibited, except with the written authorization of Thermo Fisher Scientific Inc.

The contents of this document are subject to change without notice. All technical information in this document is for reference purposes only. System configurations and specifications in this document supersede all previous information received by the purchaser.

**Thermo Fisher Scientific Inc. makes no representations that this document is complete, accurate, or error-free and assumes no responsibility and will not be liable for any errors, omissions, damage, or loss that might result from any use of this document, even if the information in the document is followed properly.**

This document is not part of any sales contract between Thermo Fisher Scientific Inc. and a purchaser. This document shall in no way govern or modify any Terms and Conditions of Sale, which Terms and Conditions of Sale shall govern all conflicting information between the two documents.

All trademarks recognized.

# Contents

<b>Welcome to GRAMS Suite 9.3</b> .....	<b>1</b>
Component Applications .....	1
Validation .....	2
Shipping Content .....	2
Installation .....	2
Comments .....	3
<b>System Requirements</b> .....	<b>4</b>
Hardware .....	4
Software .....	4
<b>Contents of the Installation Kit</b> .....	<b>5</b>
<b>Installation Instructions</b> .....	<b>6</b>
Installing the GRAMS Suite .....	6

# Welcome to GRAMS Suite 9.3

It is with great pleasure that Thermo Fisher Scientific encloses your copy of Thermo Scientific™ GRAMS Suite™ 9.3.

The GRAMS Suite of spectroscopy software is the industry standard solution for visualizing, processing, reporting, and managing spectroscopy data. The GRAMS Suite contains a collection of complementary and fully integrated applications and modules centered on the core GRAMS/AI spectroscopy data processing and reporting software. GRAMS Suite sets the industry standard for spectroscopy software with advanced processing routines, data comparison, data visualization, and its ability to handle data from any analytical instrument.

Detailed information about this release is included in the *GRAMS Suite 9.3 Release Notes*, delivered with the application. Please refer to that document for information about the latest enhancements to the software.

## Component Applications

The GRAMS Suite 9.3 consists of the following applications:

- GRAMS/AI 9.3
- GRAMS 3D 9.3
- Spectral ID 9.3
- Spectral DB 9.3
- GRAMS Convert 9.3
- GRAMS IQ 9.3
- Active Multifile Tool 9.3
- Excel Exchange 9.3
- IQ Predict 9.3

- QuickQuant 9.3

The GRAMS Suite setup executable installs all of these applications.

## Validation

GRAMS Suite 9.3 was developed in line with the Quality Management System employed by the Informatics business at Thermo Fisher Scientific. This release was tested on the following operating systems:

- Microsoft® Windows® 10 x64 Professional
- Microsoft® Windows® 8.1 x64 Professional
- Microsoft® Windows® 7 x64 Professional
- Microsoft® Windows Server® 2008 R2 SP1

## Shipping Content

GRAMS Suite 9.3 is shipped on request to supported customers. This kit includes the latest GRAMS Suite software, accompanying tools, and product release notes in PDF format.

GRAMS Suite 9.3 can also be installed from the following download site:

<http://www.gramssuite.com/downloads>

## Installation

Comprehensive installation instructions appear in this Welcome Guide. Read the instructions carefully before installation.

## Comments

Thank you for choosing Thermo Scientific GRAMS Suite.

The aim of Thermo Fisher Scientific is to deliver consistently high-quality software solutions that meet your laboratory requirements. Consequently, we are very interested in any suggestions you wish to make. Please contact us directly using the following email address:

[support.informatics@thermofisher.com](mailto:support.informatics@thermofisher.com)

Alternatively, you can find a full list of contacts on our Support website:

<http://support.thermoinformatics.com/contacts>

Regards,

Michael Ryan

**Product Manager**

# System Requirements

This section contains the hardware and software requirements for the GRAMS Suite.

## Hardware

The minimum requirements for the GRAMS Suite are:

Hardware	Required
Processor	1 GHz
RAM	1 GB
Hard Disk Space	GRAMS Suite 120 MB Microsoft .NET Framework 4.5.2 1 GB
Display Resolution	1024 x 768

## Software

The GRAMS Suite runs on the following operating systems:

- Microsoft Windows 8.1
- Microsoft Windows 7
- Microsoft Windows 10

Each operating system requires Microsoft .NET Framework 4.5.2 and Microsoft Visual C++ 2012 Redistributable Package (x86). If these programs are not installed on your system, the GRAMS Suite InstallShield wizard installs the programs for you.

# Contents of the Installation Kit

The GRAMS Suite installation kit contains the following items:

- **GRAMS Suite setup executable**

To install the GRAMS Suite and the GRAMS Converters package, run GRAMSSuiteSetup.exe.

- **GRAMS Suite 9.3 Product Release Notes**

The release notes for this release are in PDF format and include information about new functionality, revised functionality, corrected issues, and known issues.

- **README file (as needed)**

The README text file contains late updates and instructions for this release.



# Installation Instructions

This section contains instructions for:

- Installing the GRAMS Suite, including the GRAMS Converters Package and GRAMS Shell Extension Handlers.
- Licensing the GRAMS Suite.

Before installation, close all programs to make sure that files update properly, and verify that you have administrator permissions on the target machine.

The installer runs three separate installs in the following order:

1. GRAMS Converters
2. GRAMS Shell Extension Handlers
3. GRAMS Suite

## Installing the GRAMS Suite

### ❖ To install the GRAMS Suite

1. Locate and run the setup executable, GRAMSSuiteSetup.exe.

If you downloaded the file, a security warning dialog box may appear.

The warning is a Microsoft feature designed to protect users from downloading files from unknown websites. The GRAMS Suite software download has the digital signature of its publisher, Thermo Fisher Scientific.

2. Click **Run** (or similar) on any security warning dialog boxes that appear.
3. The Self-Extractor opens:

Click **Setup** to start the installation.

Click **Cancel** to stop the installation with no changes to your system.

Click **About** to see versions of the software packages.

**Note** When Setup finds a previous version of GRAMS Converters or the GRAMS Suite, a message informs you that the installer updates previous versions. Click **OK** to uninstall the previous versions and continue with the installation.

4. The GRAMS Converters Package InstallShield wizard appears.

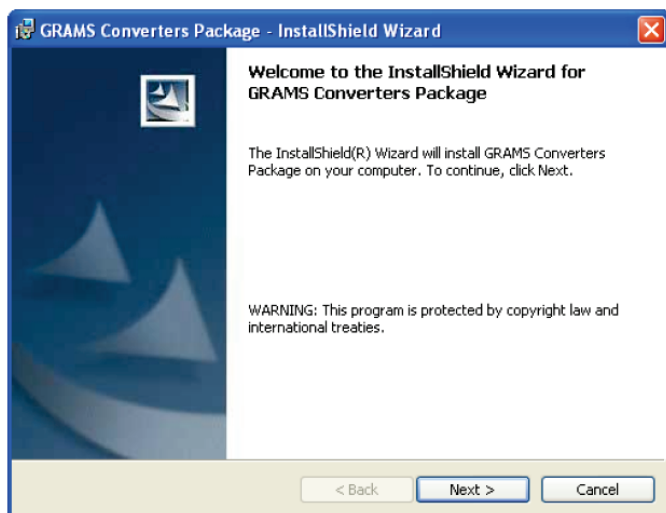
a. **Preparing to Install**

A progress bar appears while the package prepares for installation.

**Note** Setup looks on your system for Microsoft .NET Framework 4.5.2 and Microsoft Visual C++ 2012 Redistributable Package (x86) and prompts for installation when these programs are not installed. Click **Install** to install the programs that appear in the prompt.

When the wizard is ready to start the GRAMS Converters Package installation, the Welcome screen appears.

Figure 1. GRAMS Converters Package InstallShield Wizard



b. **Welcome**

To continue, click **Next**.

c. **License Agreement**

Read and accept the terms of the license agreement. To continue, click **Next**.

**Note** To print the license agreement, click **Print**.

d. **Ready to Install the Program**

At this point, the InstallShield wizard has all the information it requires for your installation.

To complete the installation, click **Install**. Click **Back** to change your selections.

**Note** A User Account Control dialog box may appear, requesting permission to continue with the installation. Click **Continue**.

e. **Installing GRAMS Converters Package**

This screen contains a progress bar that indicates the progress of the GRAMS Converters Package installation.

When all files are copied to your system, the Installation Wizard Completed screen appears.

f. **Installation Wizard Completed**

To complete the installation, click **Finish**. The InstallShield wizard closes.

5. The GRAMS Shell Extension Handlers InstallShield wizard appears.

a. **Preparing to Install**

A progress bar appears while the package prepares for installation.

When the wizard is ready to start the GRAMS Shell Extension Handlers installation, the Welcome screen appears.

Figure 2. GRAMS Shell Extension Handlers InstallShield wizard



b. **Welcome**

To continue, click **Next**.

c. **License Agreement**

Read and accept the terms of the license agreement. To continue, click **Next**.

**Note** To print the license agreement, click **Print**.

d. **Ready to Install the Program**

At this point, the InstallShield wizard has all the information it requires for your installation.

To complete the installation, click **Install**. Click **Back** to change your selections.

**Note** A User Account Control dialog box may appear, requesting permission to continue with the installation. Click **Continue**.

e. **Installing GRAMS Shell Extension Handlers**

This screen contains a progress bar that indicates the progress of the GRAMS Shell Extension Handlers installation.

When all files are copied to your system, the Installation Wizard Completed screen appears.

f. **Installation Wizard Completed**

To complete the installation, click **Finish**. The InstallShield wizard closes.

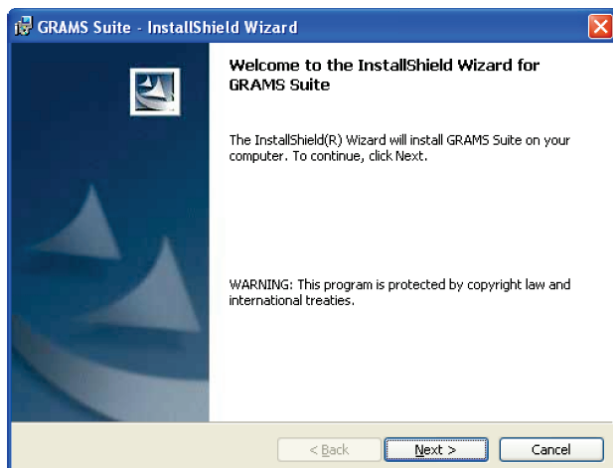
6. The GRAMS Suite InstallShield wizard appears.

a. **Preparing to Install**

A progress bar appears while the package prepares for installation.

When the wizard is ready to start the GRAMS Suite installation, the Welcome screen appears.

Figure 3. GRAMS Suite InstallShield wizard



b. **Welcome**

To continue, click **Next**.

c. **License Agreement**

Read and accept the terms of the license agreement. To continue, click **Next**.

**Note** To print the license agreement, click **Print**.

d. **Destination Folder**

You can use the default installation location, or click **Change** to designate a different location for the GRAMS Suite installation.

Click **Next** to continue.

**Note** The GRAMS Suite documentation refers to the default installation location. If you choose a different location, make a note of its path for future reference.

e. **GRAMS Suite Data Destination Folder**

The destination folder specifies the path used by the GRAMS Suite to save all information that can be modified during the operation of the applications.

You can use the default folder location, or click **Change** to designate a different destination folder location. Click **Next** to continue.

**IMPORTANT** Make sure that all GRAMS Suite users have write access to the GRAMS Suite data destination folder. Place the GRAMSSuiteData folder in a short, easy-to-remember path. Record the designated path.

f. **Ready to Install the Program**

At this point, the InstallShield wizard has all the information it requires for the installation.

To complete the installation, click **Install**. Click **Back** to change your selections.

**Note** A User Account Control dialog box may appear, requesting permission to continue with the installation. Click **Continue**.

g. **Installing GRAMS Suite**

This screen contains a progress bar that indicates the progress of the GRAMS Suite installation.

When all files are copied to your system, the GRAMS Configuration Manager appears.

**Note** After you set up a license using the GRAMS Configuration Manager, the installer returns you to the GRAMS Suite InstallShield Wizard.

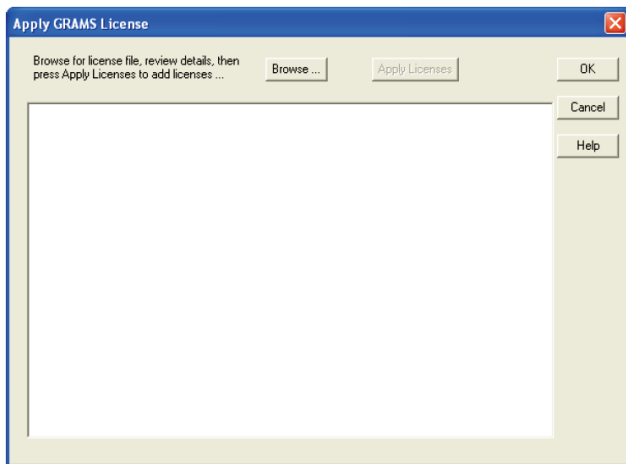
7. Set up the license in the GRAMS Configuration Manager. Access to the GRAMS Suite applications is controlled through encrypted license keys. The license is applied in the Configuration Manager in a series of prompted steps. The GRAMS License Warning is the first prompt for new installations of GRAMS Suite.

- a. To continue, click **OK** in the license warning prompt. The Apply GRAMS License window appears.

**Note** The prompts do not appear for GRAMS Suite upgrades. Follow the instructions for licensing software upgrades sent by the Sales team.

## b. Apply GRAMS License

Figure 4. Apply GRAMS License window



**Note** It is a violation of GRAMS Suite License Policy to apply a license file to more than one machine. If you must install GRAMS Suite applications on multiple machines, email [Sales](#).

- i. To select the license file, click **Browse**. The Select a License File dialog box appears.

If you purchased the software, the license file is delivered as an email attachment. If you registered for a trial version of the GRAMS Suite, use the downloaded license file. The license file has an extension of .lic.

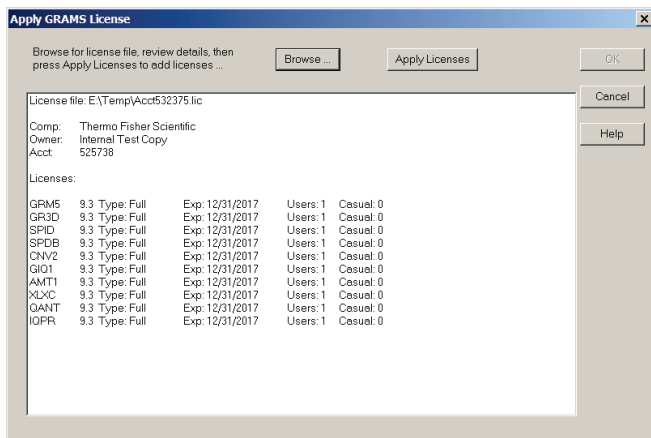
**Note** To apply the FlexNet license, follow the instructions provided by Sales.

- ii. In the Select a License File dialog box, select a license file and click **Open**. The license information populates the text area of the Apply GRAMS License window.



- iii. Review the license information in the text area of the Apply GRAMS License window and make sure that the information is accurate.

Figure 5. GRAMS license information



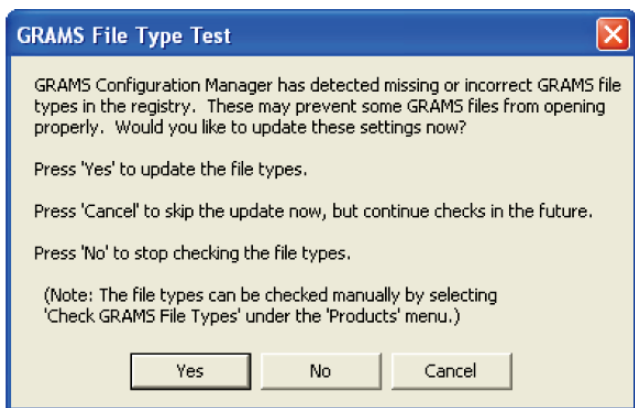
- iv. Click **Apply Licenses** to apply the license key to the relevant application files. The Apply GRAMS License window shows the applied licenses and any errors.
  - v. To save the license information and close the Apply GRAMS License window, click **OK**. Keep the GRAMS Configuration Manager open.
- c. **Registry verification**

The GRAMS Configuration Manager checks the registry to verify that the GRAMS Suite file types are registered correctly.

If any extensions are identified incorrectly, the following steps occur:

- i. The GRAMS File Type Test dialog box appears.

Figure 6. GRAMS File Type Test dialog box



- ii. To register the file types, click **Yes**. A confirmation message appears when file type registration completes.

**Note** A User Account Control dialog box may appear, requesting permission for the GRAMSAdmin.exe application to access your computer. Click **Allow**.

- iii. To close confirmation message, click **OK**.
8. From the GRAMS Configuration Manager File menu, select **Exit** to close the application and return to the GRAMS Suite InstallShield wizard.  
The Installation Wizard Completed screen appears.
9. To complete the installation and close the InstallShield wizard, click **Finish**.